

1. Important safety instructions

All operations described in this manual must be performed by qualified electrical personnel. Before installing the device, disconnect all power supplies and strictly comply with the relevant national electrical installation codes and regulations.

The end user and installer shall be responsible for the following matters:

1. Compatibility Verification: Ensure that the system voltage, mechanical structure and operating temperature are fully compatible with the mounting frame and connected equipment.

2. Installation Specifications: When installing the track, do not exceed the load capacity and installation spacing specified in this document.

o Rated input voltage and current per circuit track: DC48V/12A (maximum load ≈ 580W)

o Recommended maximum number of luminaires per meter of track: ≤3pcs, weight per luminaire: ≤1KG

3. Accessory Compliance:

o Do not mix the track, its accessories and adapters with uncertified third-party components

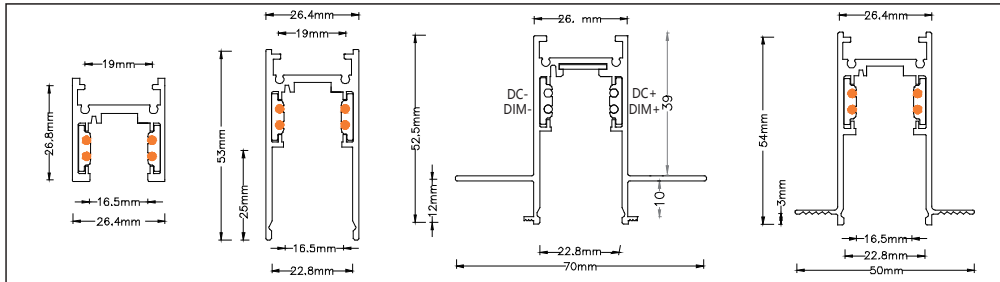
o Our company's tracks can only use original manufacturer-specified connectors, and such connectors are exclusively for use with our company's tracks

o All accessories must be installed strictly in accordance with the installation instructions

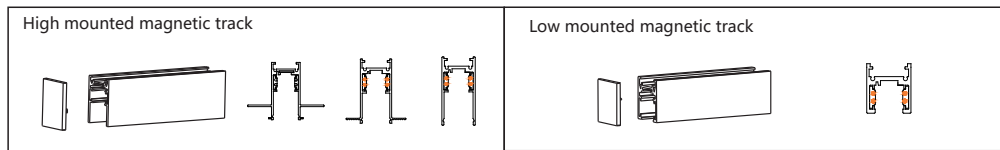
o If non-original spare parts are used or installation is not performed in accordance with the instructions, our company will not be liable for the safety and functionality of the system. The responsibility for verifying the relevant electrical performance, mechanical performance and thermal compatibility shall be borne solely by the user

4. Environmental Requirements: The recommended operating ambient temperature for magnetic track luminaires is -15°C ~ +40°C.

2. Magnetic Track Dimension Drawing

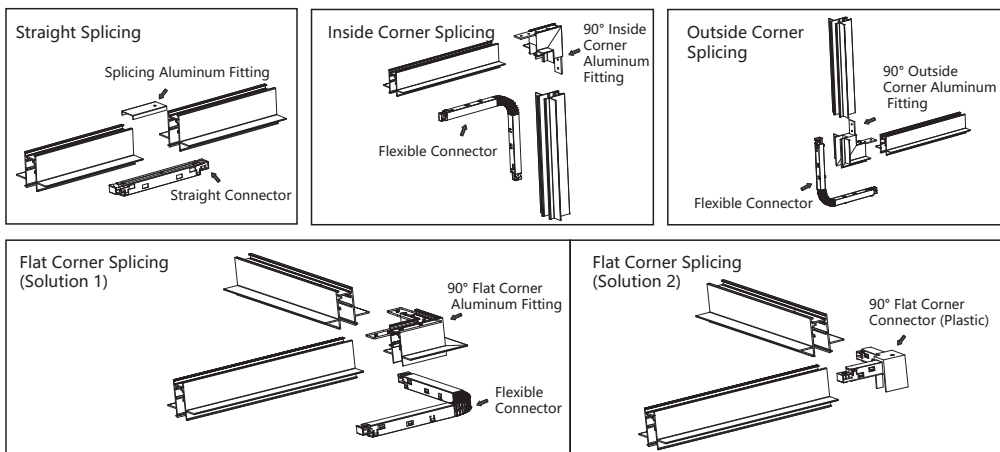


3. End Cap Installation instruction



The end caps are used for both the starting and terminating ends of the same circuit track. Snap them into place and secure them to the track.

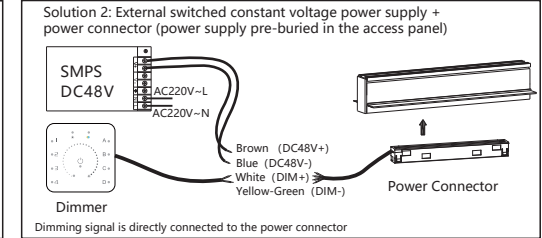
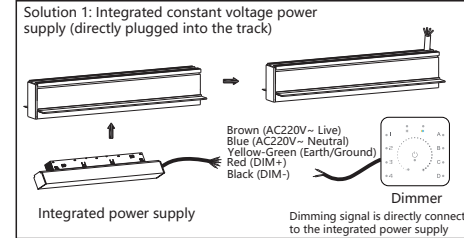
4. Track Splicing Schematic Diagram



The 90° flat corner, 90° inside corner and 90° outside corner splicing solutions are compatible with all models of magnetic track installations. T-joints and cross-joints can also be customized upon request.

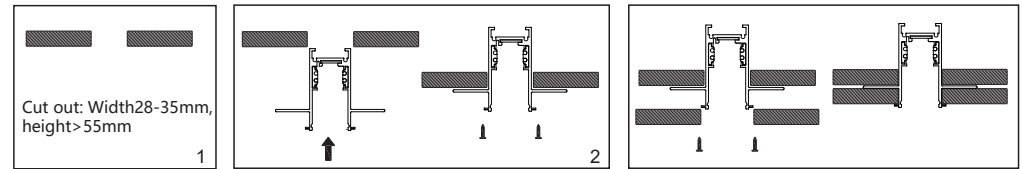
5. Driver installation instruction

Note: The power supplies used for both non-dimmable luminaires and DALI/0-10V dimmable luminaires are non-dimmable constant voltage power supplies (the dimming module is already built into the luminaire connector).



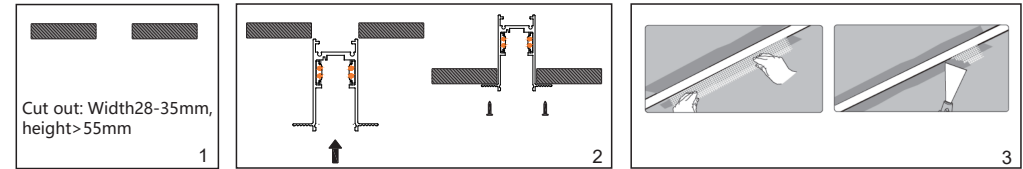
6. Track installation

Recessed magnetic track (Splint)



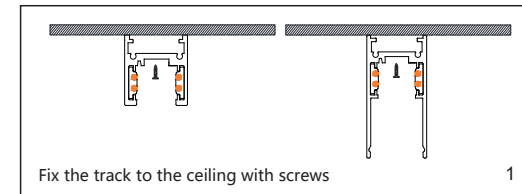
Cut holes in the load-bearing board according to the size requirements (Fig. 1), then fix the track on the load-bearing board with screws according to the operation shown (Fig. 2), then lay plasterboard on the lower end and fix it with screws (Fig. 3), and finally cover with net and plaster it (the cover of the track must be closed when plastering). (Note: screws are provided by the installer himself)

Recessed magnetic track (Plaster)



Cut holes in the load-bearing board according to the size requirements (Fig. 1), then fix the track on the load-bearing board with screws according to the operation shown (Fig. 2), and finally cover with net and plaster it (Fig. 3) (the cover of the track must be closed when plastering). (Note: screws are provided by the installer himself)

Surface mounted magnetic track



Suspended mounted magnetic track

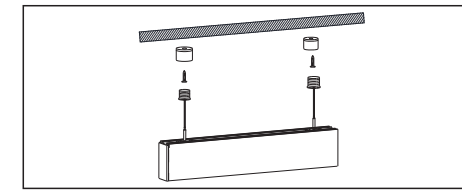


Diagram of luminaire installation and removal

