

LED Strip Installation Instructions

1.

## ⚠ WARNING !

The following safety precautions are intended to prevent any injury or damage to other things, and may cause damage if the product violates precautions during use.

- 1、 Installation and inspection of the product must be carried out by a professional with an electrician's certificate.
- 2、 Please use DC24V power supply. Please insure right positive and negative connection. Do not use other power sources, such as AC220-240V.
- 3、 All power cables should be with protection treatment. The power supply wiring should be insulated and waterproof.
- 4、 The product should not be covered thermal insulation material or inflammables, which may cause the product to malfunction or catch fire.
- 5、 The installation must be firm, without loosening, sagging, etc., and the product cannot be moved forcibly after installation.
- 6、 For safety, do not look directly at the LED light source.
- 7、 Do not use as task illumination when in building construction.
- 8、 LED module can't be changed.

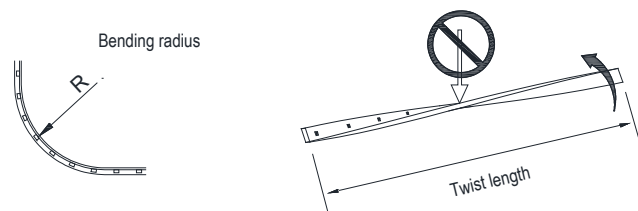
## PRECAUTIONS

Precautions for storage:

- 1、 storage temperature and humidity: 0°C-55°C 40-70%RH
- 2、 Do not unwarp packaging during storage. Please place in the direction indicated by the carton. Do not stack heavy objects on the packing box.
- 3、 Please do not store the product under the following conditions:
  - High humidity
  - High temperature
  - confetti and dust
  - sunlight exposed
  - Chemicals such as strong acids, strong bases, solvents, etc

Precautions for installation and use:

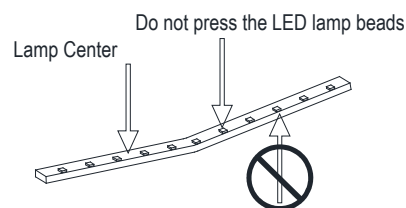
- 1、 Install in strict accordance with the instructions.
- 2、 temperature of product use: -10°C-+40°C. Do not use under the following conditions:
  - High temperature
  - high humidity,
  - dust,
  - sun exposure,
  - strong acid and strong alkali solvents,
  - >2000 meters high altitude,
  - high air pressure,
  - electromagnetic influence,
  - places that may cause vibration or fall
- 3、 Random cutting, breakage, forcibly pull, twist, press and tag on the product is prohibited.



When bending radius of the strip is  $\geq 100\text{mm}$ , do not bend the strip with less than the radius. When the twist length is  $\geq 500\text{mm}$ , the twist angle can be  $360^\circ$ . When the length is less than 500mm, the strip can't be twisted.

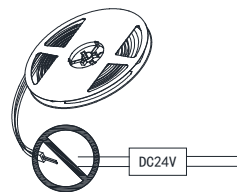
Image 1

Image 2



Do not press the LED lamp beads

Image 3



Do not energize the light strips in the reel or when there are other entanglements.

Image 4

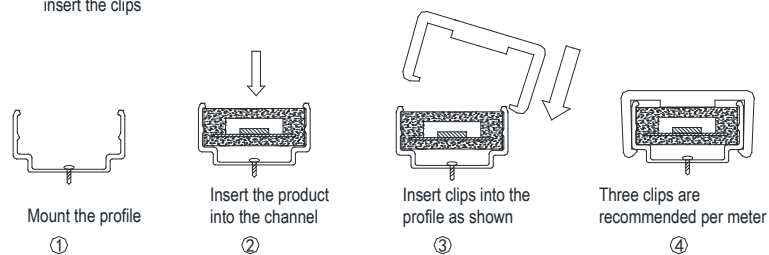
## I Mounting

If other brands are used, the light strip may be damaged

### 1、 Mounting with Aluminium Profile:

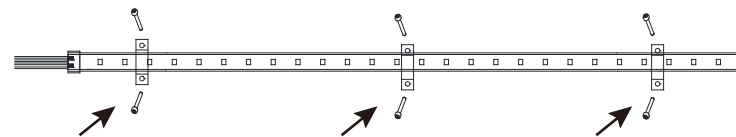
103427 Aluminium Profile

Securely mount the profile with appropriate screws, insert the product into the channel, and then insert the clips



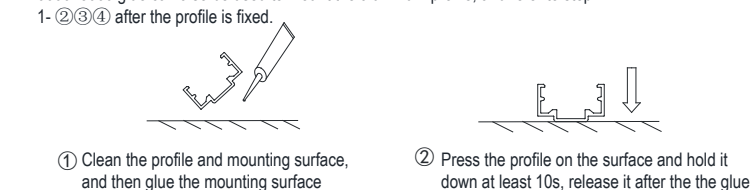
### 2、 Mount with clips:

Preset the strip light onto installation spot with clips fixed by screw. (Recommended use 3 clips per meter)



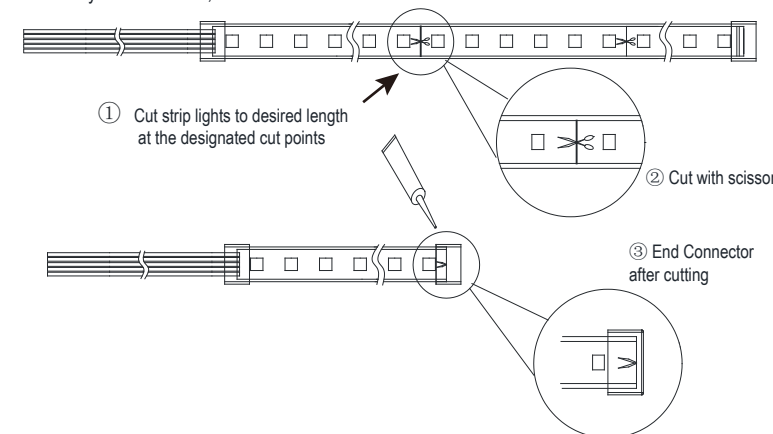
### 3、 Mounting profile with glue:

006018000 glue can also be used to mount the aluminum profile, and refer to step 1- ②③④ after the profile is fixed.



## II Cutting and Connecting

1、 If you need to cut, the method is as follows



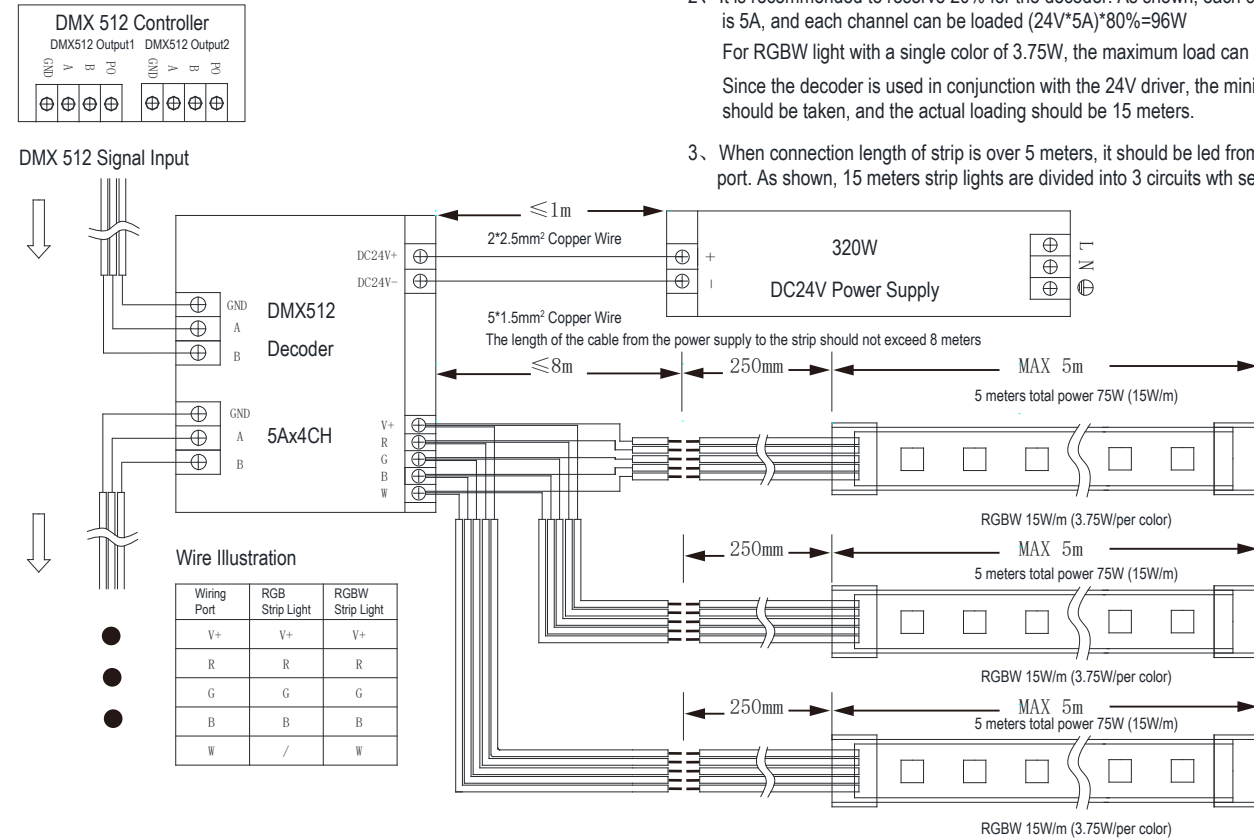
Apply the silicone adhesive evenly to the cut ends (including the pipes) that need to be covered by the plug, cover the plug after completion, and power after 2 hours of glue injection.

Note on Connecting:

It's not recommended to connect after cutting for RGB and RGBW strip light. Special length is recommended to be done by the factory

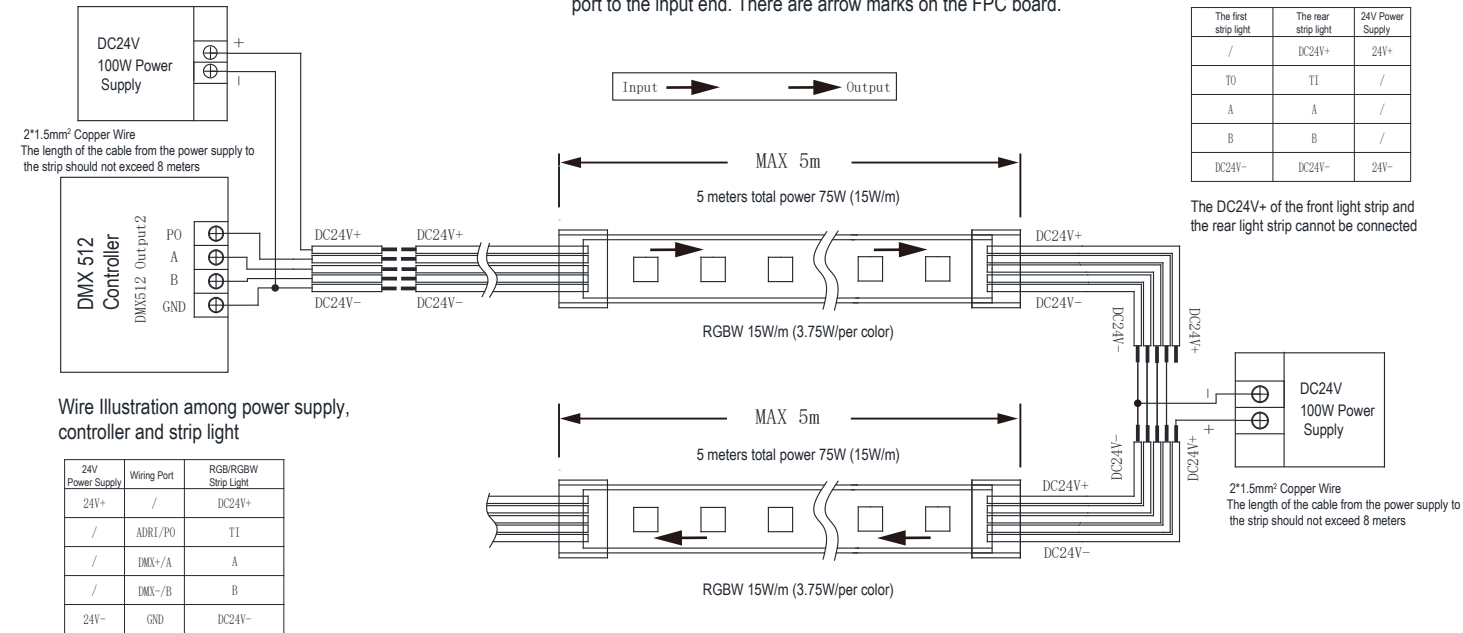
### III Wiring Illustration

#### 1.RGB/RGBW strip light (0 pixel control)



7.

#### 2.Wiring Illustration for RGB/RGBW/WWW with pixel control



8.

9.

10.

### NOTES:

- It is recommended to reserve 20% of the power supply. As shown, with 100 power supply, and 15W/m strip, the actual load is rounded to 5 meters
- The maximum length of the light strip is 5 meters. If the length exceeds 5 meters, a separate DC24V power supply is required. For lights powered by different power supplies, DC24V+ cannot be connected together.
- The length of the light strip that the controller can carry is determined by the specifications of the controller
- Do not reverse input and output end when connecting

### CAUTIONS:

- Turn off the power before installing or handling the product.
- Make sure the power supply and the strip light are firmly fixed
- Do not reverse polarity when connecting.
- Double check all connections before turning on power and the exposed wire ends need to be waterproof and insulated.
- It is recommended to reserve at least 20% of the power supply and non-isolated power supplies cannot be used

### Maintenance

- to ensure the stable use of the product and prolong its service life, regular inspection and cleaning is needed
- Cleaning and inspection at least every 3 months with power off

### Inspection Method

- Whether driver and chips work well
- Whether there is unusual smell, sound or heat.
- Whether there are breakage, or looseness, etc. If an abnormality is found, please immediately power off and stop using, and eliminate the abnormality in time.

### Cleaning

- Gently wipe the product with a soft cloth.

11.