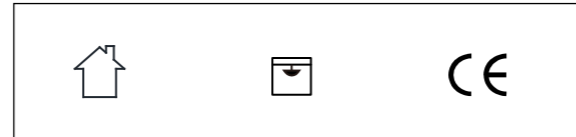


KLEE

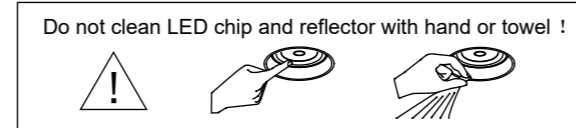
Klee series installation instructions

SERIES	LONG	SERIES	LONG	SERIES	LONG
4222113	1000mm	4222112	1000mm	4322114	1000mm
	1500mm		1500mm		1500mm
	2000mm		2000mm		2000mm
LP00107	1000mm	LP00108	1000mm	LP00109	1000mm
	1500mm		1500mm		1500mm
	2000mm		2000mm		2000mm
LP00110	1000mm				
	1500mm				
	2000mm				



This product is only suitable for indoor, it is not allowed to be rinsed with water.

LED driver is built in, the luminaire is pendent - mounted.



- Use only drivers that comply with IEC or CE safety standards.
- Check if the power supply match with the luminaire.
- Must consider the maximum current value displayed on the label of the luminaire.
- The voltage displayed on the luminaire is not used to select the constant voltage driver, but the voltage covered by the selected constant current driver.
- Take suitable ESD measures to avoid touching bare conductors.
- LED chips can be damaged if be in touch with chemical material or gas. Therefore, it is not allowed to clean the LED housing or luminaire by chemicals.
- The following items are confirmed to have negative impact on the performance of the luminaire, avoid to keep luminaire in the same circumstance with them.
  - Methyl acetate or ethyl acetate (i.e., nail polish remover)
  - Cyanoacrylates (i.e., "Superglue")
  - Glycol ethers (including Radio Shack © Precision Electronics)
  - Cleaner - dipropylene glycol monomethyl ether
  - Formaldehyde or butadiene (including Ashland PLIOBOND © adhesive)
  - Dymax 984-LVUF conformal coating
  - Loctite Sumo Glue, Loctite 384 adhesive, Loctite 7387 activator
  - Gorilla Glue, Bleach, Bleach-containing cleaners, sprays
- Remove the insulation material from the luminaire or provide enough space so that the temperature raising will not overpass the limited TC.
- LED chip is very sensitive to switching transients, therefore, LED lamps and appliances must be connected after power cut off, no hotswappable.
- Recommends using the driver indicated on the luminaire manual.
- Must consider the polarity of the product.
- If the external flexible cable or cord of this lamp is damaged, the cord should be replaced by the manufacturer or its service agent or a similarly qualified person.
- The light source in this lamp should be replaced by the manufacturer or its service agent or a similarly qualified person.

**INSTALLATION ENVIRONMENT** (different installation environments, different installation steps on site)

**INSTALLATION ENVIRONMENT 1:**

- A. Concrete ceiling, no suspended ceiling;
- B. Paper gypsum board ceiling, thickness  $\geq 15\text{mm}$  (and need to be reinforced with wood when installing, as shown in Figure 1).

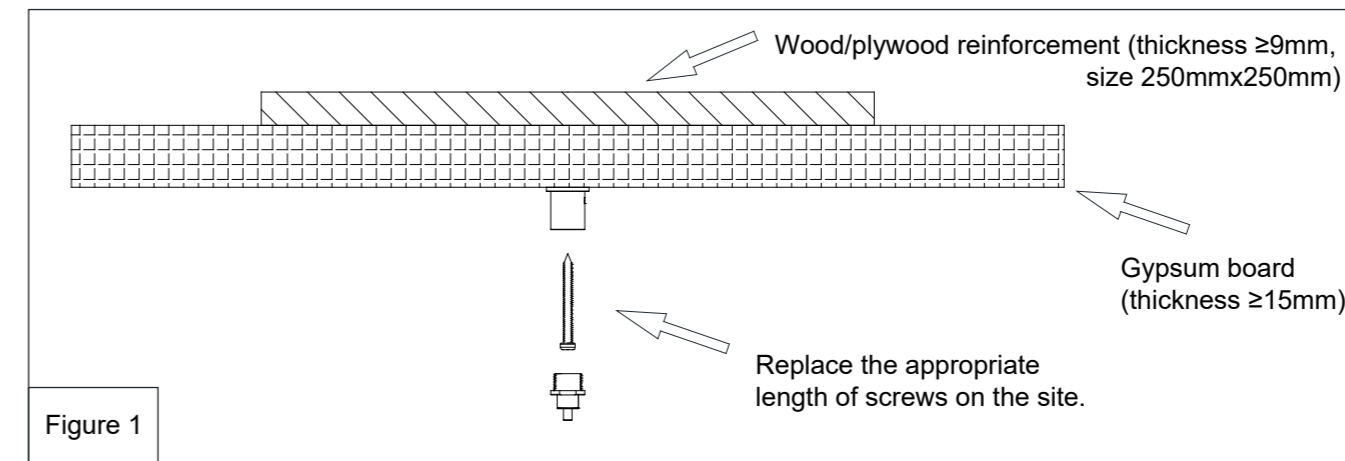
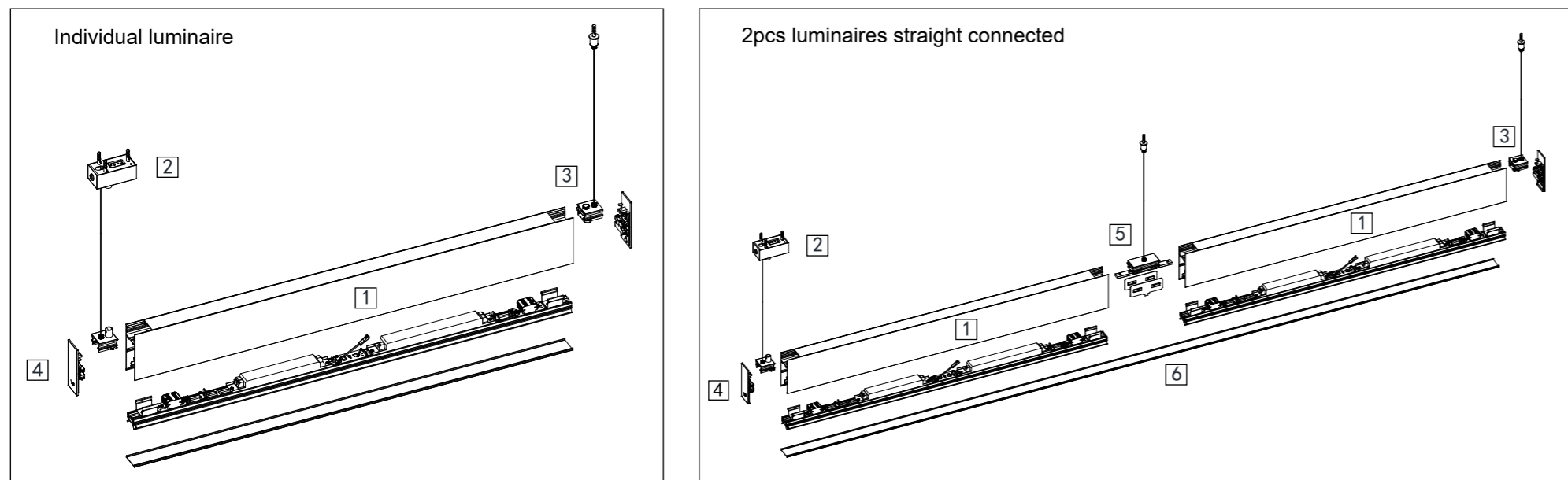


Figure 1

**Relative position of the component when it is installed**

Individual luminaire	2pcs luminaires straight connected	3pcs or more luminaires straight connected
<p>Power cable hole <math>\text{Ø}15\text{-}20\text{mm}</math></p> <p>L: luminaire length</p>	<p>Power cable hole <math>\text{Ø}15\text{-}20\text{mm}</math></p> <p>L: luminaire length</p>	<p>Power cable hole <math>\text{Ø}15\text{-}20\text{mm}</math></p> <p>L: luminaire length</p>
<p>Install the following components on the ceiling firstly:</p> <ol style="list-style-type: none"> <li>2. Junction box + side hanging plate 8201029XXX</li> <li>3. Side hanging plate 810319(83/93)XX</li> </ol>	<p>Install the following components on the ceiling firstly:</p> <ol style="list-style-type: none"> <li>2. Junction box + side hanging plate 8201029XXX</li> <li>3. Side hanging plate 810319(83/93)XX</li> <li>5. Straight connection component 8207042XXX</li> </ol>	<p>Install the following components on the ceiling firstly:</p> <ol style="list-style-type: none"> <li>2. Junction box + side hanging plate 8201029XXX</li> <li>3. Side hanging plate 810319(83/93)XX</li> <li>5. Straight connection component 8207042XXX</li> </ol>

**DESTRUCTION DIAGRAM OF LUMINAIRE STRUCTURE**



The main lamp body and accessories and the corresponding item number:

1. Main lamp body (lamp type)
2. Ceiling box + side hanging plate component 8201029XXX
3. Side hanging plate component 810319(83/93)XX
4. Side cover component 810100(4/5/6/7)XXX
5. Linear connection components 8207042XXX
6. Flexible diffusion cover 8412249(5/6)000, 8412280(6/7)000

**INSTALLATION ENVIRONMENT 2:**

Because the ceiling of the following materials can not bear the weight, the wire rope of the lamp needs to be fixed on the concrete ceiling (or main keel) for bearing, and the wire rope needs to pass through the following ceilings and then fixed on the concrete ceiling (Figure 2).

- A. Mineral wool board ceiling;
- B. Aluminum gusset ceiling;
- C. Silicon calcium plate ceiling;

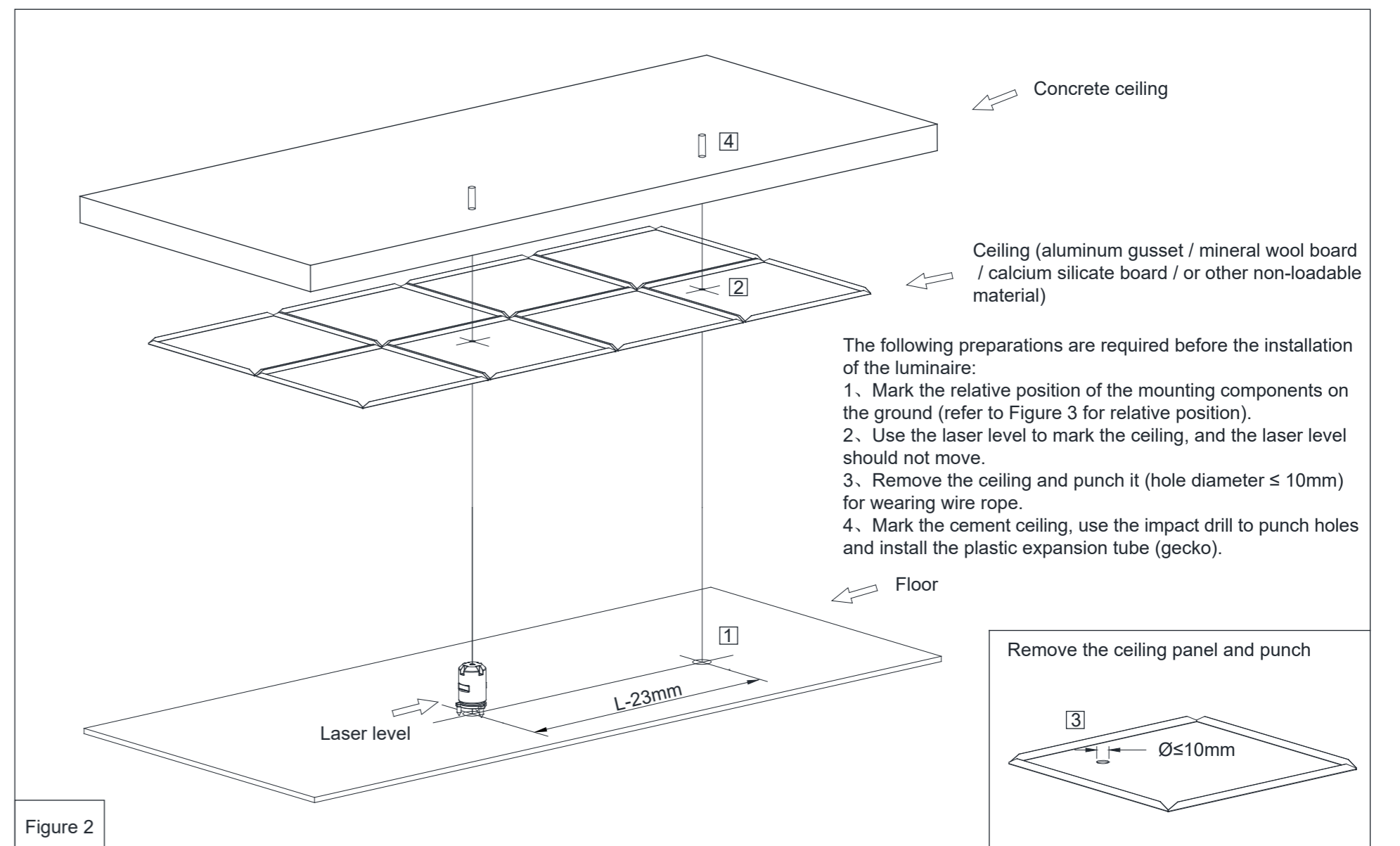
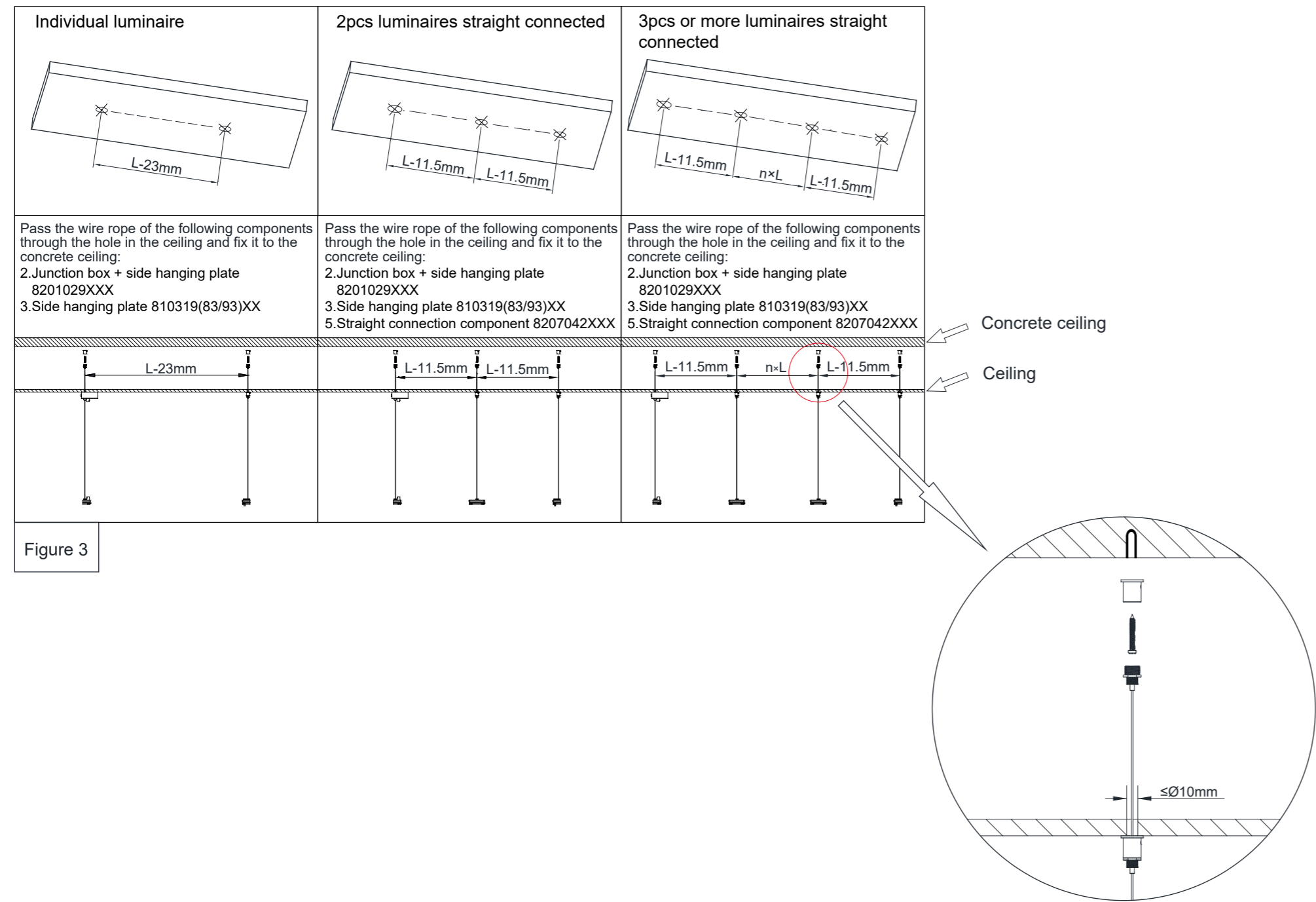
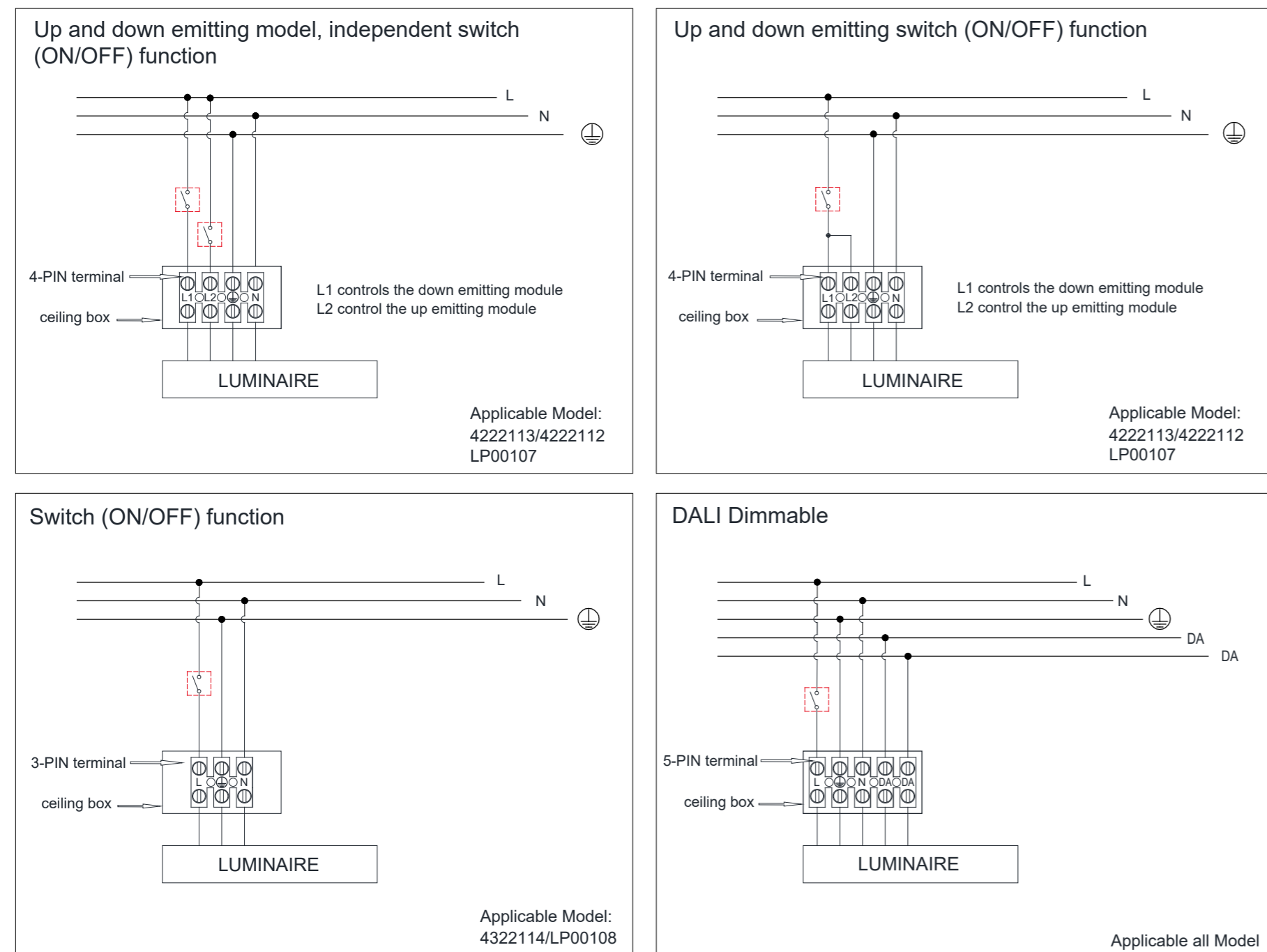


Figure 2

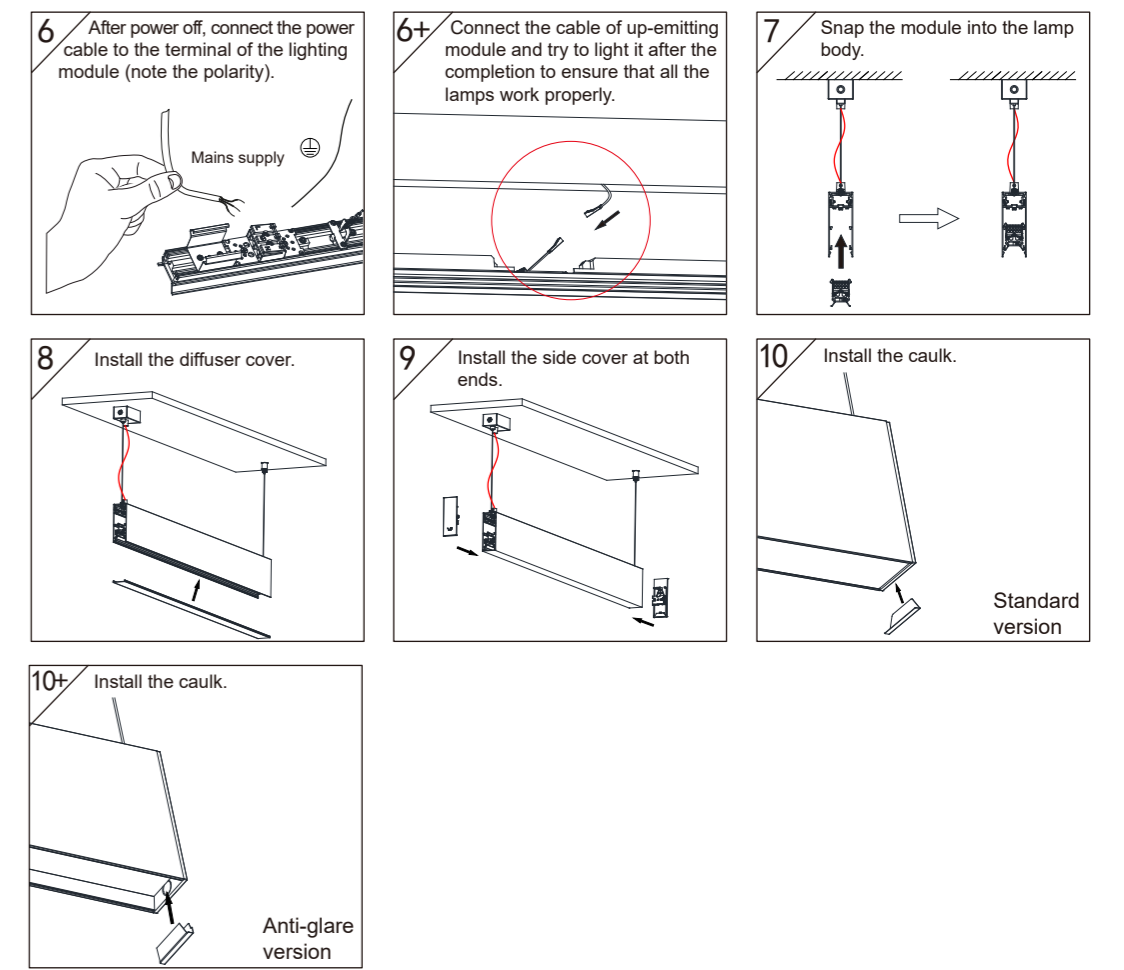
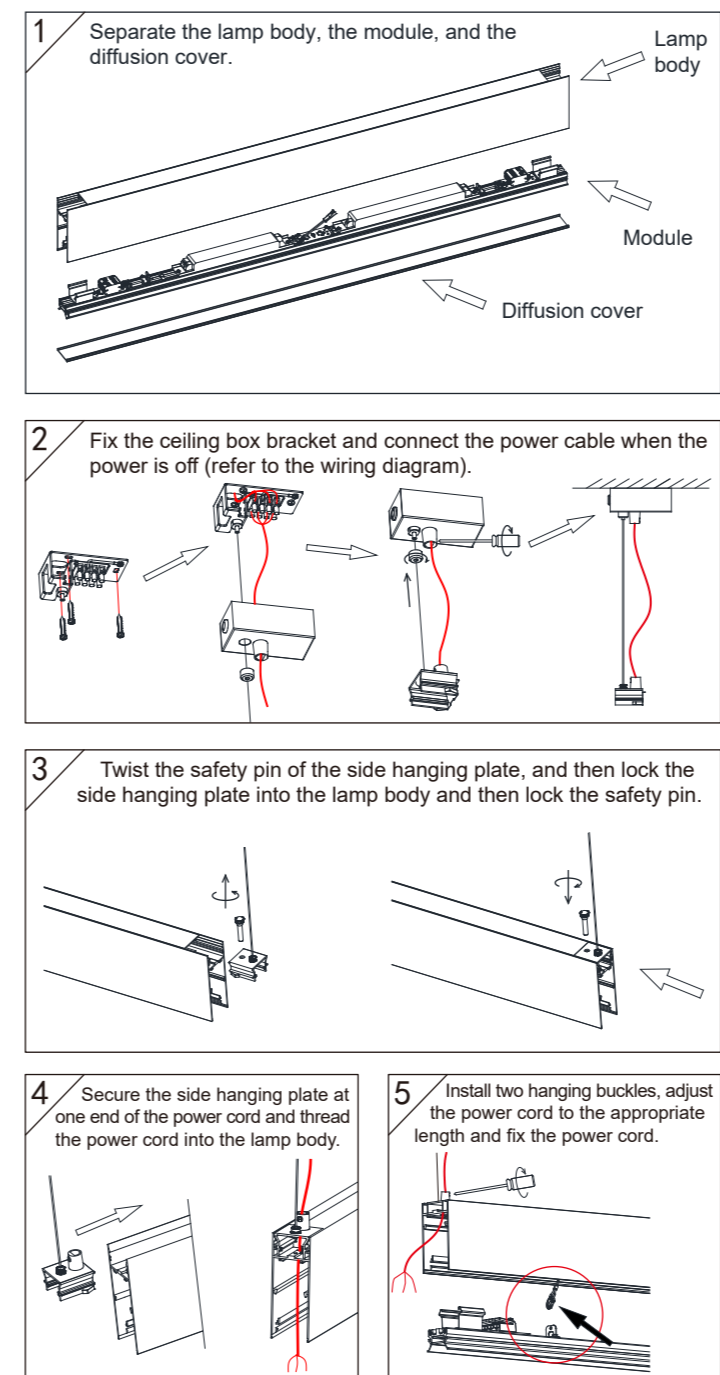
Relative position of the component when it is installed



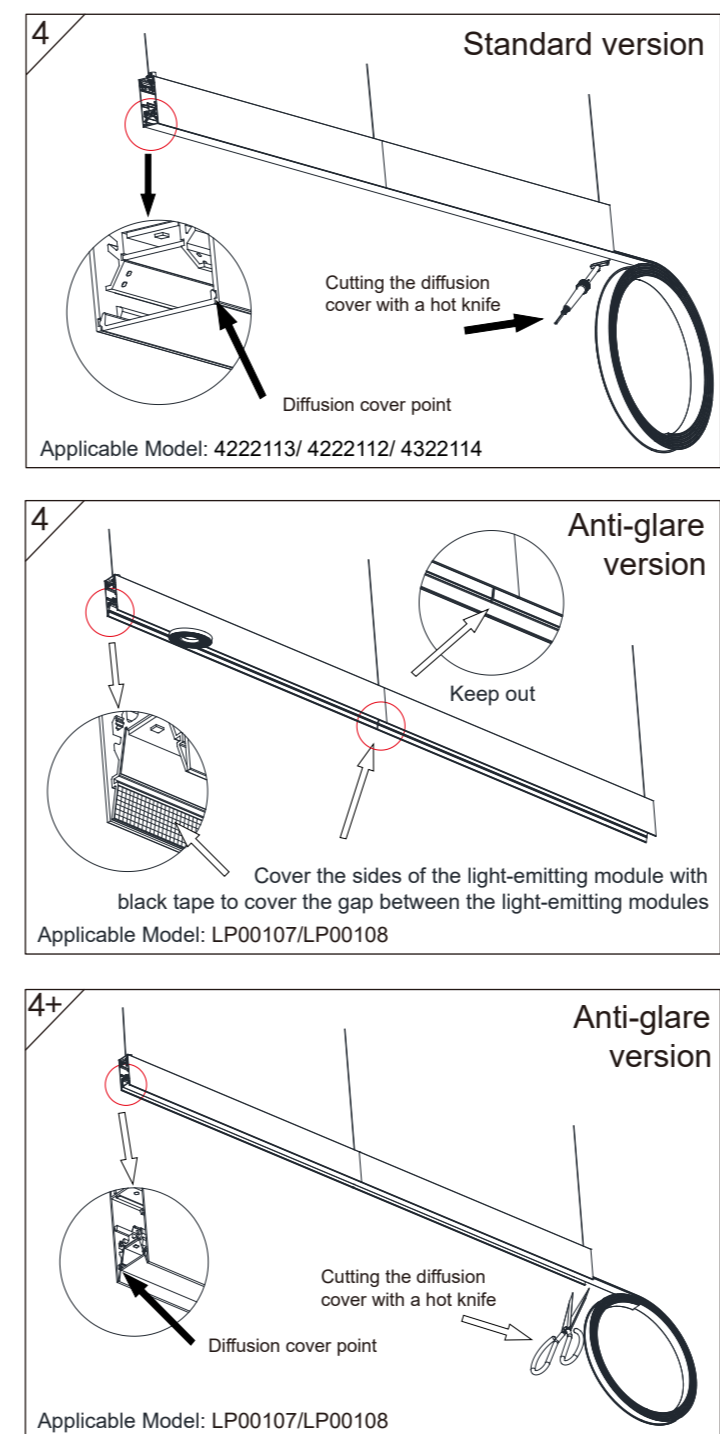
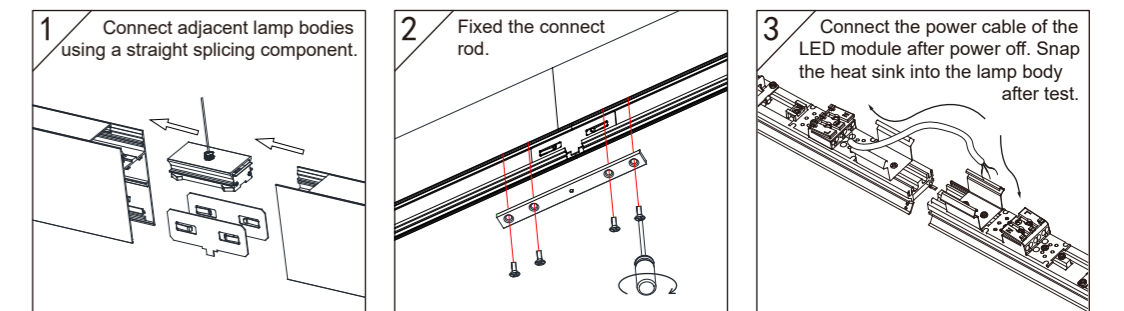
WIRING DIAGRAM



INSTALLATION INSTRUCTIONS



CONNECTION



MAINTENANCE

