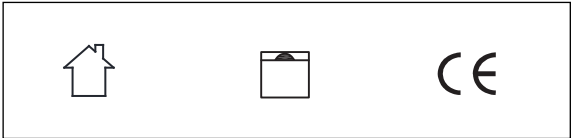
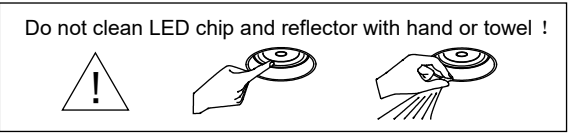


KLEE

Klee series installation instructions



- This product is only suitable for indoor, it is not allowed to be rinsed with water.
- LED driver is built in. recessed mounted.

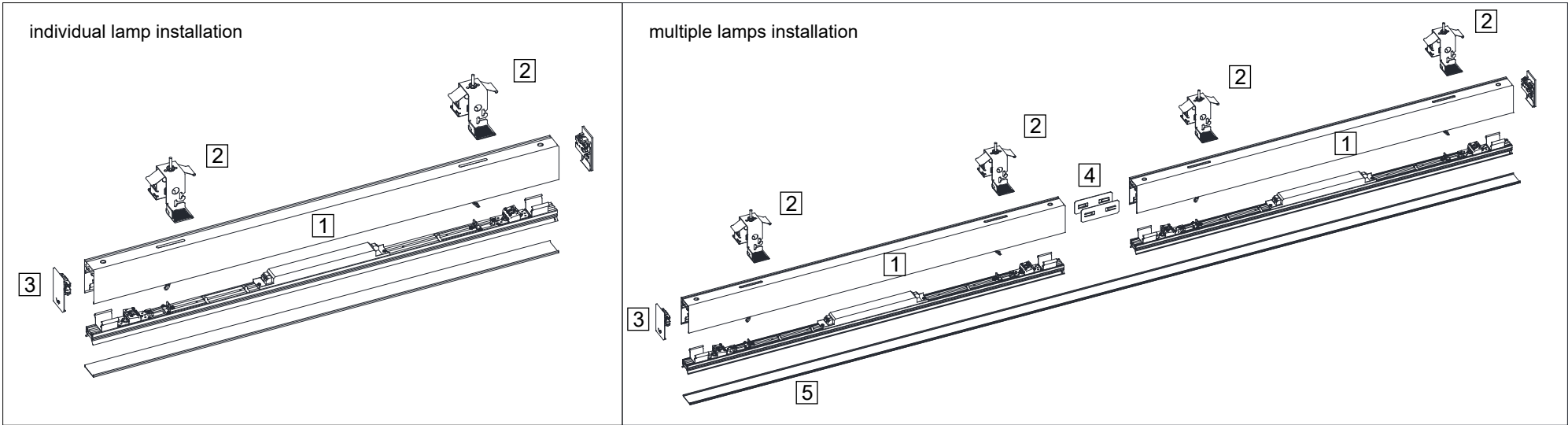


- Use only drivers that comply with IEC or CE safety standards.
- Check if the power supply match with the luminaire.
- Must consider the maximum current value displayed on the label of the luminaire.
- The voltage displayed on the luminaire is not used to select the constant voltage driver, but the voltage covered by the selected constant current driver.
- Take suitable ESD measures to avoid touching bare conductors.
- LED chips can be damaged if be in touch with chemical material or gas. Therefore, it is not allowed to clean the LED housing or luminaire by chemicals.
- The following items are confirmed to have negative impact on the performance of the luminaire, avoid to keep luminaire in the same circumstance with them.
 - Methyl acetate or ethyl acetate (i.e., nail polish remover)
 - Cyanoacrylates (i.e., "Superglue")
 - Glycol ethers (including Radio Shack ® Precision Electronics Cleaner - dipropylene glycol monomethyl ether)
 - Formaldehyde or butadiene (including Ashland PLIOBOND ® adhesive)
 - Dymax 984-LVUF conformal coating
 - Loctite Sumo Glue- Loctite 384 adhesive- Loctite 7387 activator
 - Gorilla Glue- Bleach, Bleach-containing cleaners, sprays
- Remove the insulation material from the luminaire or provide enough space so that the temperature raising will not overpass the limited TC.
- LED chip is very sensitive to switching transients, therefore, LED lamps and appliances must be connected after power cut off, no hotswappable.
- Recommends using the driver indicated on the luminaire manual.
- Must consider the polarity of the product.
- If the external flexible cable or cord of this lamp is damaged, the cord should be replaced by the manufacturer or its service agent or a similarly qualified person
- The light source in this lamp should be replaced by the manufacturer or its service agent or a similarly qualified person

I 、 Diagram of luminaire structure

Lamp body and accessories type ,corresponding item number :

- 1.lamp body
- 2.pre-installation kit 8210106X41
- 3.side cover 81010040XX
- 4.straight connector 8207041X00
- 5.rollable diffuser cover 8412280(6/7)000



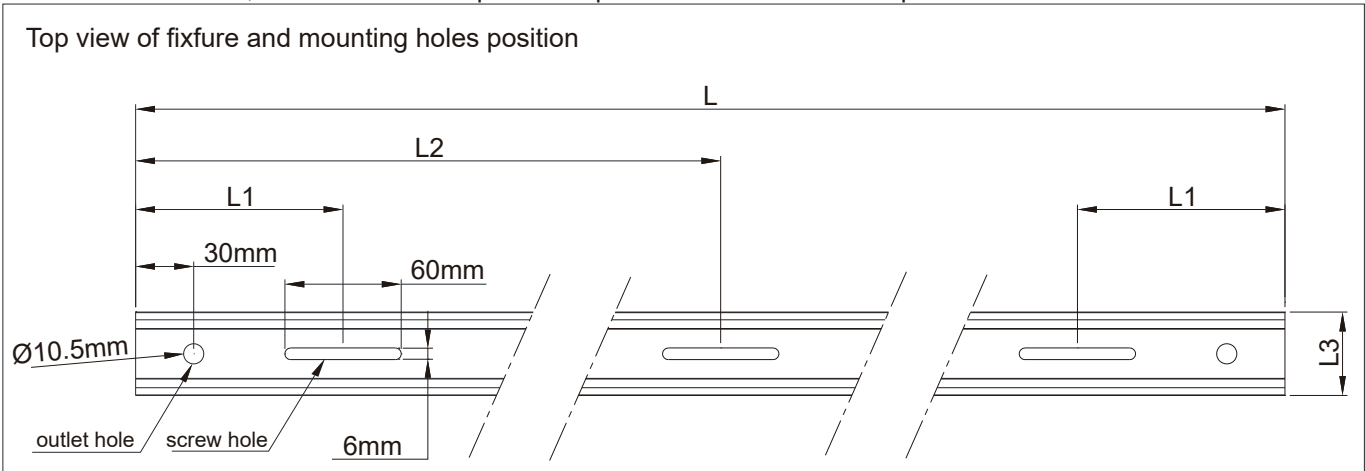
II 、 Model and dimension

Before installation, it is necessary to confirm the hole spacing corresponding to the model of the lamp, and then make a mark punch in the ceiling installation position according to the hole distance dimension, and install the lamp and the power cord in the case of power off.

Table 1: Comparison of hole spacing and cut-out size of each type of lamp

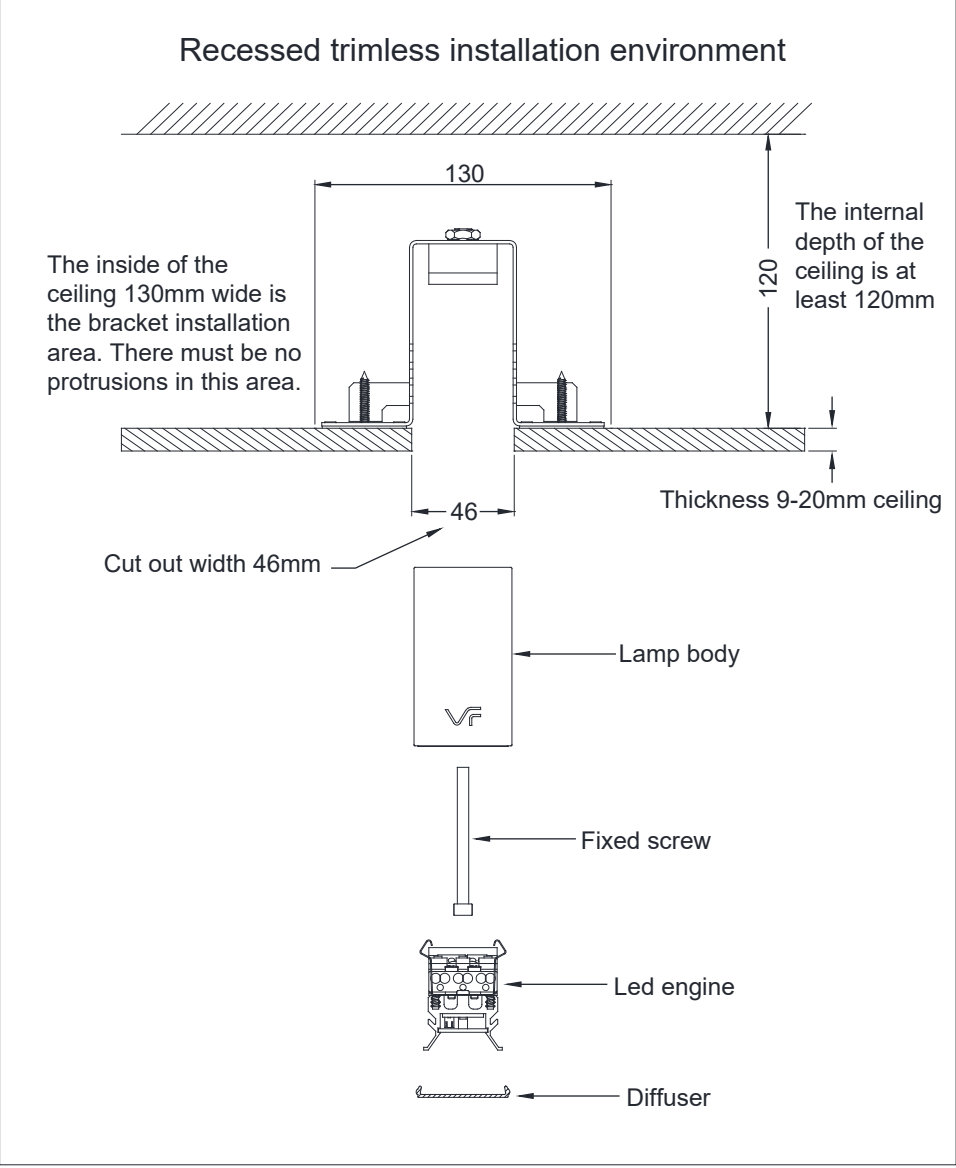
SERIES	L (mm)	L1 (mm)	L2 (mm)	L3 (mm)	cut out (mm)
LR00101	500	170	-	43	46×508
	1000	175	-	43	46×1008
	1200	175	600	43	46×1208
	1500	175	750	43	46×1508
	2000	175	825	43	46×2008

When multiple lamps are stitched in a straight line
Cut out width: 46mm
Cut out length: total length of the lamp +8mm

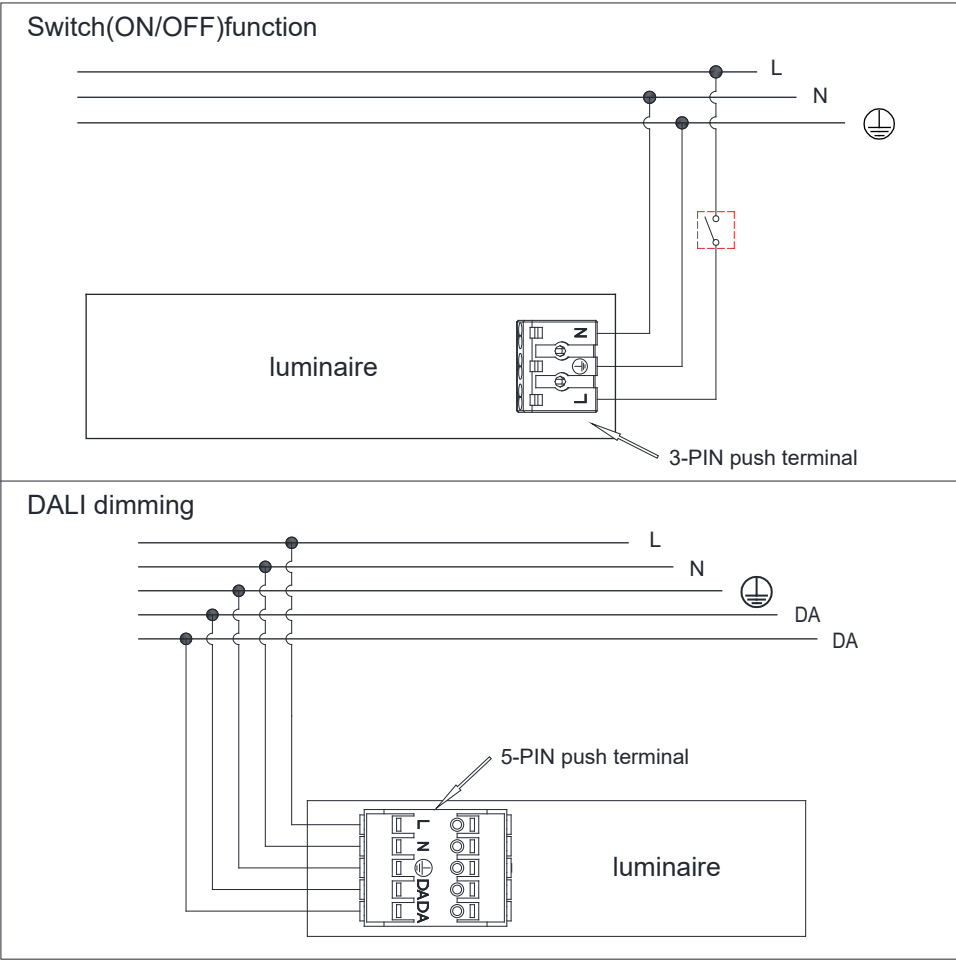


III、Installation Environment

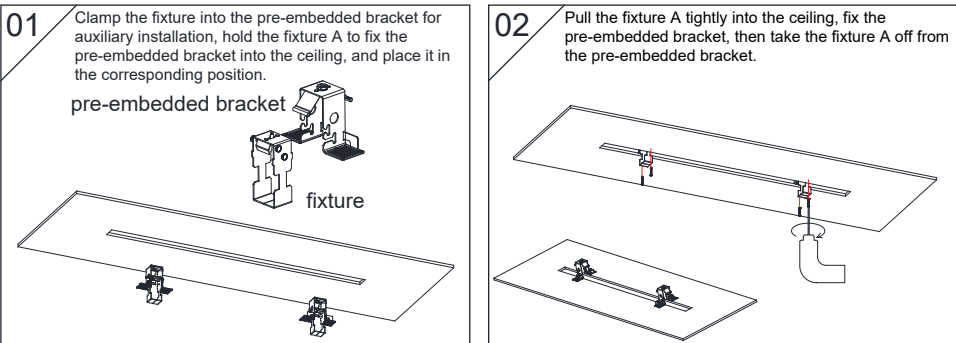
This installation method is only suitable for gypsum board ceiling, plywood or other wooden ceiling;
As to the following types of ceiling materials, this installation method is not applicable.
A.Mineral wool board B.Aluminous gusset plate
C.Calcium silicate plate D.Other non-load-bearing materials



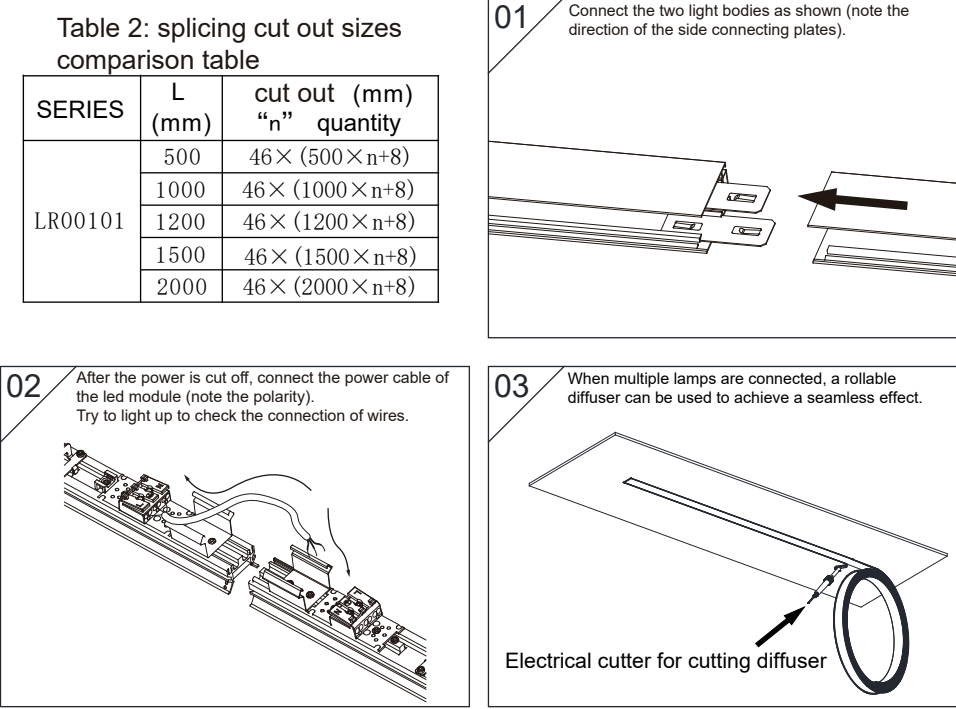
IV、Power wiring diagram



V、Installation manual



VI、multiple connect manual



VII、Lamp maintenance manual

