

ASTA series installation instructions

SERIES	Embedded part size (outer diameter)
BB00203	Φ 103mm
BB00204	Φ 103mm
BB00206	Φ 148mm
BB00208	Φ 148mm

Application range:

The product is applicable to indoor and outdoor locations such as squares, side walks, yards, corridors.

Installation instructions I

This instruction is suitable for light with broad trim, which is trim cover installation

1.1 Install the embedded part in the settled assembly position, and tidy the power cable

The embedded part shall be on the same level with the concrete surface

The embedded part shall be above the presupposed power cable

The suggested thickness of sandstone is at least 30-50cm

Below the embedded part shall be paved by sandstone so that water could run off.

1.2 Connect the waterproof accessory with the power cable. Install the light into the embedded part with lamp body downward.

The arrow points to the lighted object (if there is)

Waterproof wire connector is suggested to use for connecting power cable

Optional accessory 1

1.3 Light up and finish installation

220V AC

24V DC

Switching Power Supply

Waterproof junction box

Optional accessory 2

Optional accessory 3

1.4 For repair or change, the light can be pulled out by a matched sucking disc or a straight screwdriver

Pull out the light with a glass sucker

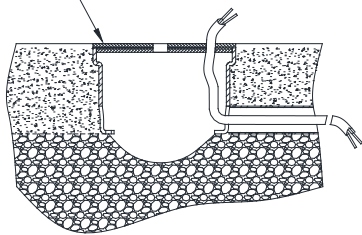
Or pull out the light from the gap by a straight screwdriver

Installation instructions II

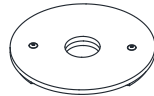
This instruction is suitable for light with narrow trim, which is flush ground installation

2.1 Install the embedded part in the settled assembly position, and tidy the power cable

Clip the installation template in the embeddead part and keep it at the same level with the concrete surface



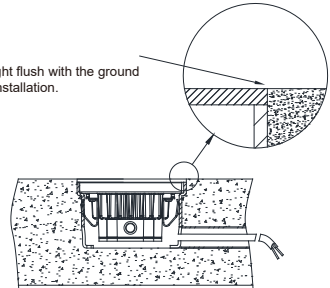
2.2 Connect the waterproof accessory with the power cable. Install the light into the embedded part with lamp body downward.



Take out the installation template after cement solidification.

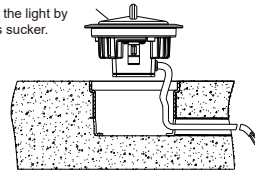
2.3 Connect the light with power cable referring Step 1.2 and 1.3. The light shall flush with the ground.

The light flush with the ground after installation.



2.4 For repair or change, the light can be taken out by the matched sucker.

Take out the light by the glass sucker.



The specific appearance shall be subject to our actual products !

Wiring instructions

2 core wire (applicable for non-dimmable light)



Brown wire: DC 24V +
Blue wire: DC 24V -

4 core wire (applicable for DALI/0-10V dimmable light)



Red : DC 24V +
Black : DC 24V -
Green : DIM +
Yellow : DIM -

6 core wire (applicable for DMX dimmable light)



Brown : DC 24V +
Green : DC 24V -
Purple : DIM +
Gray : TI/TO
White : DIM -
Black : GND

- Use only drivers that comply with IEC or CE safety standards.
- Check if the power supply match with the luminaire.
- Must consider the maximum current value displayed on the label of the luminaire.
- The voltage displayed on the luminaire is not used to select the constant voltage driver, but the voltage covered by the selected constant current driver.
- Take suitable ESD measures to avoid touching bare conductors.
- LED chips can be damaged if be in touch with chemical material or gas. Therefore, it is not allowed to clean the LED housing or luminaire by chemicals.
- The following items are confirmed to have negative impact on the performance of the luminaire, avoid to keep luminaire in the same circumstance with them.
 - Methyl acetate or ethyl acetate (i.e., nail polish remover)
 - Cyanoacrylates (i.e., "Superglue")
 - Glycol ethers (including Radio Shack ® Precision Electronics Cleaner - dipropylene glycol monomethyl ether)
 - Formaldehyde or butadiene (including Ashland PLIOBOND ® adhesive)
 - Dymax 984-LVUF conformal coating
 - Loctite Sumo Glue, Loctite 384 adhesive, Loctite 7387 activator
 - Gorilla Glue, Bleach, Bleach-containing cleaners, sprays
- Remove the insulation material from the luminaire or provide enough space so that the temperature raising will not overpass the limited TC.
- LED chip is very sensitive to switching transients, therefore, LED lamps and appliances must be connected after power cut off, no hotswappable.
- Recommends using the driver indicated on the luminaire manual.
- Must consider the polarity of the product.
- If the external flexible cable or cord of this lamp is damaged, the cord should be replaced by the manufacturer or its service agent or a similarly qualified person
- The light source in this lamp should be replaced by the manufacturer or its service agent or a similarly qualified person